



Description

In this still life I have introduced impasto and bold brush strokes and here I placed the whole arrangement in an open space. So by relocating the subject(still life arrangement) I have tried to improvise an outdoor feel inside an indoor arrangement.

Title : Sunflowers

Size : 36"x45"

Medium : Acrylic on canvas



- Avik Mondal



References



A bigger splash, David Hockney



La retour, Rene Magritte



Starry night, Vincent Van Gogh



The Parakeet and the Mermaid, Henry Matisse

Description

The painting gradually took up a shape by taking references from my favourite artworks, 'Starry Night' by Van Gogh, 'The splash' by David Hockney, together with the paintings of Henry Matisse and Rene Magritte. The whole idea is to appropriate these visuals with the still life study that we are working on.

Title : Veranda

Size : 42"X48"

Medium : Acrylic on Canvas



- Avik Mondal



References



The Son of Man, Rene Magritte

Description

This painting initially started as a 'study' and eventually turned into a 'creative composition' class. In 'The Clairvoyance' by Magritte, he painted self portrait and a painting of a bird by looking at an egg. The painting is an evident of brilliant intuition about a thing and his skill to predict the outcome. Understanding this thought, I tried to create a dramatic space where I tried to portray myself instead, so I turned the face black to depict that the face is temporary, as well as to highlight the apple in front of the face, I have tried to hide it from the audience to show my own mental barrier to stay in the dark.

Title : Intuition

Size : 30"x36"

Medium : Oil on Canvas



- Ayan Karmakar



References



The great wave, Katsushika Hokusai

Description

I have always been attracted towards sea and this affinity compelled me to put this still life on a sea beach. I often observe crows having their food in the beach and here I have flocked them together around the stray egg's trays those have been placed in the arrangement of our 'still life study' class.. While shaping the sea I have not missed to put the painting, Hokusai's 'The great wave'.

I did this work in our class under mentorship of my teacher.

Title : Untitled

Size : 3'x4'

Medium : Acrylic on canvas



- Biswa Swaraj Mallick



References



The canal of gravelines, in the direction of sea , George Seurat's



La Luzerne, Saint-Denis, George Seurat's

Description

Taking reference from George Seurat's 'The canal of Gravelines in the direction of sea' and 'La Luzerne'.

I have merged these two paintings with the still life containing Magritte's 'La Clairvoyance', which was a part of our 'still life study' class. Here I have tried to improvise the technique of pointilism from Seurat's work.

Title : Untitled

Size : 11"x14"

Medium : Watercolour and Gouache



- Biswa Swaraj Mallick



References



Man in a bowler hat, Rene Magritte



The Son of Man, Rene Magritte



Goldfish, Henri Matisse

Description

This was basically a 'still life study' under the guidance of our teacher, Samindranath Majumdar. He simply changed our idea of 'still life study' by placing hanging eggs, trays and even a painting itself as an object. Here my inspiration of using vibrant colours was from Henri Matisse and I placed Matisse's 'Goldfish' in front of Magritte's 'La Clairvoyance' as in many of Magritte's paintings he had placed a bird or an apple in front of the portrait which I have also tried here to imbibe a surreal approach in this work.

Title : A birds dream from the aquarium

Size : 36" x 42"

Medium : Acrylic on Canvas



- Debarati Ghosh



References



Bird in space, Constantin Brancusi



The dream, by Henri Rousseau

Description

The reference of my painting is taken from 'The dream' by Henri Rousseau. The flora and fauna of this work has always amazed me. I have combined this painting with the still life placed in our 'still life study' class. In this painting I have also put the image of 'Bird in space', a sculpture by Constantin Brâncuși.

Title : Untitled

Size : 36" x 48"

Medium : Acrylic on Canvas



- Jayanta Das



l'Acacia

References



The Interpretation of Dreams, 1930. By René Magritte



The Newbornversion I, 1920 (close to the marble of 1915) by Constantin Brancusi

Description

I have been inspired by these two works while doing the still life.

Title : Untitled

Size : 26 cm×33 cm

Medium : Tempera



- Jayanta Das



References



Matisse in the studio-I, Henry Matisse

Description

This painting of mine was initially a 'still life study'. My mentor, in the class has changed the way of seeing the still life. That inspired me to take cues from Henri Matisse's, 'Matisse in the studio- I', which has completely changed this 'still life study' painting into a new work all together.

Title : Untitled

Size : 30"x36"

Medium : Acrylic on Canvas



- Krishnendu Bhattacharjee



References



Dance, Henry Matisse



Les oiseaux, Henry Matisse

Description

This is done in Cross hatching using watercolour, tempera, gouache and wash. Here I have shown an empty plate on the table as if the artist of the painting 'La Clairvoyance' had taken the omelette while working.

I have painted the sky, the way Henri Matisse did it in his 'Les oiseaux'. I have also used his 'Dance' in this work.

Title : Untitled

Size : 10"x29"

Medium : Watercolour, Wash, Tempera and Gouache



- Krishnendu Bhattacharjee



bird
egg tray.. bird
tray..

References



Work of Roy Lichtenstein



Airborne, Andrew Wyeth

Description

I have made this painting of the 'still life study' that has been arranged in the classroom. Here, in my work, I have merged the references from the landscape painting of Andrew Wyeth, 'Airborne' and the speech bubble concept, the obvious pop element present in the works of Roy Lichtenstein.

Title : 'Bird.. egg.. trays..bird..trays'

Size : 28cmx38cm

Medium : Tempera



- Pritam Jana



References



Christina's world , Andrew Wyeth

Description

The still life that has arranged in the classroom was of eggs, trays and a painting of Magritte's 'La Clairvoyance'. Here in this composition I have quoted the grassland from Andrew Wyeth's painting 'Christina's World'. Hence, the indoor 'still life study' arrangement has been relocated into an open air outdoor space.

Title : Untitled

Size : 38 "x56"

Medium : Acrylic on canvas



- Pritam Jana



References



The eye, Salvador Dalí

Description

In the 'still life study', arranged in our classroom we can see Rene Magritte's artwork, 'La Clairvoyance'. I have tried to place this classroom arrangement of still life into a distant land which has been inspired by Salvador Dalí's (another surrealist like Magritte) work, 'The eye'.

Title : Untitled

Size : 30"x36"

Medium : Acrylic on Canvas



- Riparna Acharya



References



The first days of spring, Salvador Dalí

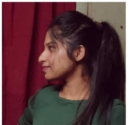
Description

Here in this work, I have incorporated the elements of 'still life study', arranged in our classroom, in the surreal space of Salvador Dalí's, 'The first days of spring'

Title : Untitled

Size : 11"x12"

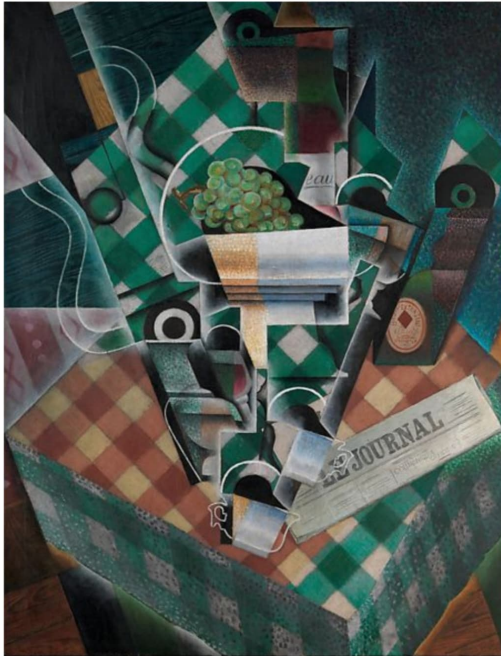
Medium : Tempera



- Riparna Acharya



References



still life with checked tablecloth, Juan Gris

Description

This painting is a kind of renewal of the first painting although the subject matter of this painting completely differs from the previous one.

The eggs are mainly kept on the egg tray so that they don't break and it can be consumed as food. But this might cause the death of many embryo in the egg, as a result so many birds are deprived of birth. Here also I have quoted from Juan Gris's painting titled 'still life with checked tablecloth'.

Title : The life and death

Size : 11"x15"

Medium : Tempera



- Sandipan Manna



References



Still life with checked tablecloth, Juan Gris

Description

The idea of this work arose from a still life painting. While I was working, various ideas came into my mind. In the still life arrangement there was a painting of Rene Magritte where he has painted a table, I have changed the table cloth into a patterned one, inspired by one of my favourite artists, Juan Gris, titled 'still life with checked tablecloth'. The whole composition was made from the still life arrangement, set in the classroom but I took the liberty to get rid of the stillness of it, and that is why, my painting cannot be considered as a 'still life study'. The surreal elements overtly present in the still life arrangement inspired me to change the self image of Rene Magritte, the artist into a magician.

Title : Magician

Size : 48"x48"

Medium : Acrylic on Canvas



- Sandipan Manna



References



Bedroom in Arles, Vincent Van Gogh

Description

I have been inspired by this work of Van Gogh while doing the still life

Title : Untitled

Size : 16"x20"

Medium : Acrylic on Canvas



- Sarmista Das



References



Hans Thoma ,Wundervögel



Landscape, Kent. R Walls

Description

I have created this painting in our so called 'still life study' class by taking uncanny image reference from artist Hans Thoma. Here I have also engulfed the whole still life arrangement with overtly prettified floral colourful landscape of Kent R. Walls as a kitsch.

Title : Untitled

Size : 30"x36"

Medium : Acrylic on Canvas



- Sarmista Das



References



Red Studio, Henry Matisse

Description

This painting is an example how a 'still life' study goes beyond the pedagogical boundary of a 'still life study' class. Here, I took some part of this still life and juxtaposed that with the painting of Henry Matisse (Red Studio).

Title : Magritte in red studio

Size : 10"×12"

Medium : Tempera



- Shalini Kundu



References



Morning session, Henry Matisse



By Henry Matisse

Description

This painting is an example how a 'still life' study goes beyond the pedagogical boundary of a 'still life study' class. Here, I took some part of this still life and juxtaposed that with the painting of Henry Matisse (Morning Session). In this work Rene Magritte sits in the studio of Matisse so the table cloth has been replaced by the same from Matisse's painting and the egg was designed and painted in red too. I have tried to blend the ideas of surrealism, with the bright pure colours and lyrical brushing of Matisse.

Title : Magritte in studio of Matisse

Size : 3'x4'

Medium : Acrylic on Canvas



- Shalini Kundu



References



Piazza d'Italia, Giorgio de Chirico

Description

Rene is drawing a picture of a bird looking at an egg on a table - there are numerous egg trays heaped up on the floor and some eggs are hanging in the front. This was the main visual/theme of the still life, but without being loyal to the retinal reality of the visuals presented in the arrangement of the still life given in the classroom, I wanted to come out of the limited space and create a new space in my picture. I tried to show my feeling of being in outdoor, so here, Rene has come out in a space created by another surrealist, Giorgio de Chirico.

Title : Rene & Chirico

Size : 30"×40"

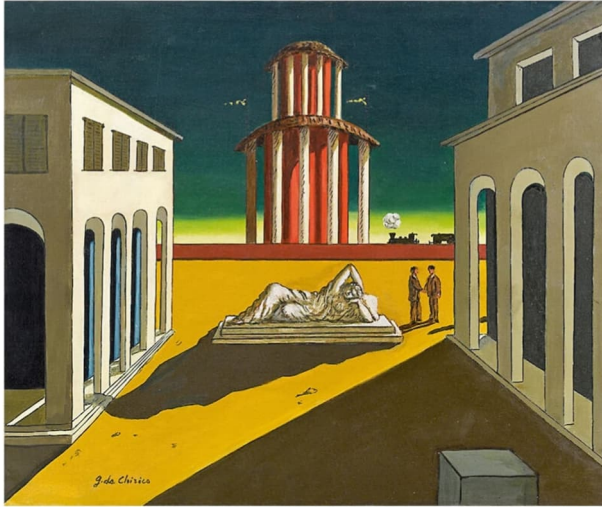
Medium : Acrylic on Canvas



- Soujit Kundu



References



Enchanted space in the city of Nietzsche, Giorgio de Chirico

Description

In this sequel work here Rene had completed the painting and went off.

Title : Rene's journey

Size : 10"x12"

Medium : Canvas board



- Soujit Kundu



References



By Jogen Chowdhury

Description

In this painting, Rene had entered into the space of Jogen Chowdhury's painting. Here he is drawing under the dark half moon starry night sky and his muse is observing the painting sitting on the right side of the picture . Here, Rene is drawing an owl, a nocturnal bird.

Title : Rene & Jogen

Size : 8"x12"

Medium : Tempera



- Soujit Kundu



References



Blue II, Joan Miró

Description

The painting is done from the 'still life' arrangement placed in our class by our mentor, Samindranath Majumdar by using printed image of Magritte's 'La Clairvoyance' pasted on the wall with some hanging eggs and lots of egg trays. I have always been fascinated by the another surrealist, Joan Miro. His abstract organic shape, use of flat colour and loose brush strokes engage me a lot. In this work the whole blue background and the red eggs is indirectly inspired from his work(Blue II).

Title : The red eggs

Size : 36"x42"

Medium : Acrylic on canvas



- Sourav Ghara



References



Doll series, Bikash battachjee

Description

This painting was initially started as a 'still life study' but it went beyond. A painting 'La Clairvoyance' itself is an object of the still life. It was printed on a flex and arranged with egg trays and hanging eggs. Here in my painting I blended the study of the still life with a painting of Bikash Battachjee, (at times, considered as a surrealist painter too) from his 'doll series'. I put the whole still life arrangement with post covid Rene Magritte in the terrace painted by Bikash Battachjee.

Title : Untitled

Size : 3'x4'

Medium : oil on canvas



- Subhendu Karmakar



References



Doll series, Bikash battachjee



Mughal Painting (detail)

Description

This painting was initially started as a 'still life study' but it went beyond. A painting 'La Clairvoyance' itself is an object of the still life. It was printed on a flex and arranged with egg trays and hanging eggs. Here in my painting I blended the study of the still life with a painting of Bikash Bhattacharjee, (at times, considered as a surrealist painter too) from his 'doll series'. I put post covid Rene magritte and put a checker board background as a floor, from a top view, the way the mughal painters used to do, I used the doll of the 'doll series' on the table. It is a continuation of my 1st painting.

Title : untitled

Size : 10"×12"

Medium : Tempera



- Subhendu Karmakar